

Available Marks	Total Marks Gained
100	



ENTRANT NAME

New Zealand Music Examinations Board

THEORY - FOURTH GRADE

Time: 9.30am- 11.30am

Saturday 27th October 2007

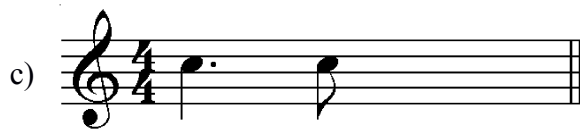
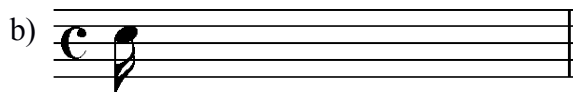
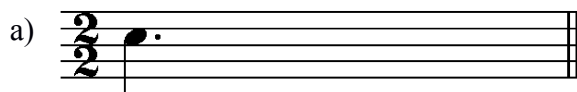
Time Allowed: 2 Hours

Write your Name in the box labelled 'Entrant Name'

Question 1	TIME and RHYTHM	Total Marks 14
-------------------	------------------------	-----------------------

A		6
----------	--	----------

Complete the following bars with rests in the proper order.



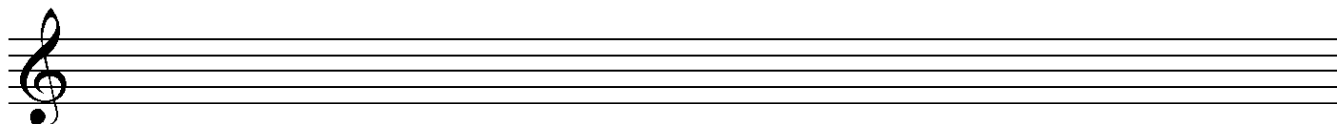
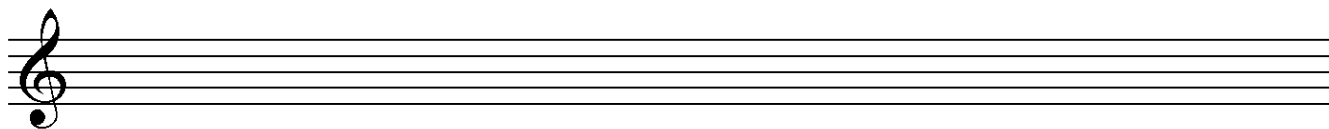
B		4
----------	--	----------

Add barlines to the following rhythm in $\frac{2}{2}$ time.



C		4
----------	--	----------

Group these notes correctly, adding barlines to make four bars of $\frac{9}{8}$ time.



Question 2**SCALES and MODULATION****Total Marks 11****A****5**

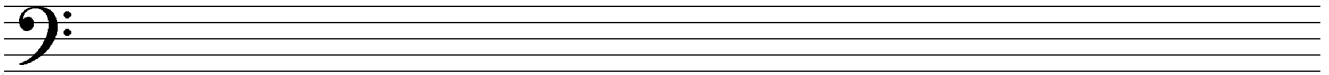
Write the scale of C# Minor

Write the Key Signature

Use Crotchets

Write one octave ascending and one octave descending

Mark each semitone with a slur

**B****4**

Write the following four Key Signatures, then write the notes as indicated.

D Flat Major
Leading NoteF# minor
SupertonicG flat major
SubmediantB flat minor
Leading Note**C****2**

The following melody modulates and ends in a new key. State:

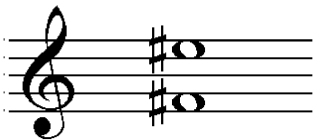
The name of the new key

Its relationship to the original tonic key



Key of Modulation:

Relationship to original
tonic key:

Question 3**INTERVALS****Total Marks 11****A****3**Name the following intervals (eg Major 3rd) - written above the tonic notes





Question 3**INTERVALS contd.****B****4**

Write these intervals above the given tonic notes.



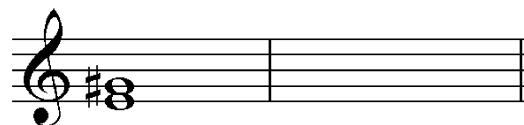
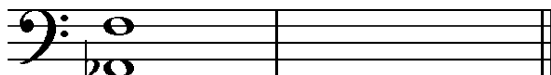
Major 3rd

Minor 6thPerfect 4th

Minor 3rd

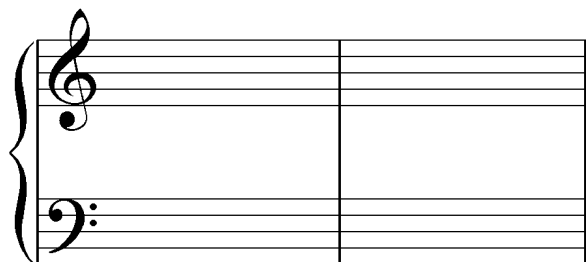
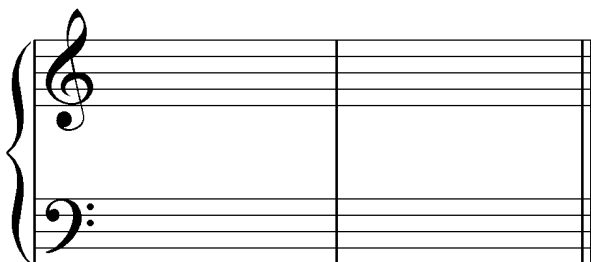
C**4**

Write the inversions of the following two intervals. Name the inversion.



Question 4**CADENCES and HARMONY****Total Marks 24****A****8**

Write the following Cadences
 Use the correct Key Signatures
 Use Minims

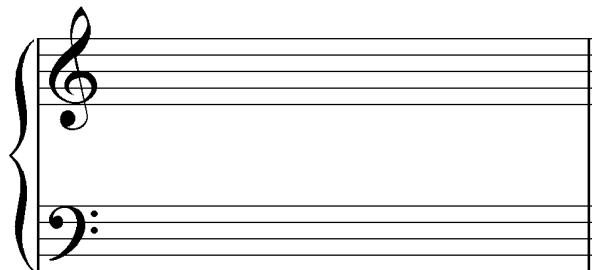
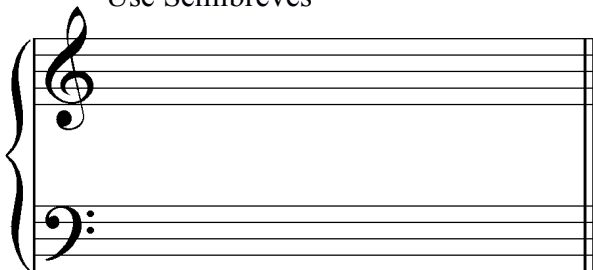


E flat Major
 Imperfect Cadence
 Pianoforte Style

F sharp minor
 Perfect Cadence
 Vocal Style

B**8**

Write the following chords in four-part vocal style
 Use Key Signatures
 Use Semibreves



A flat Major
 Chord IV
 Root Position

C Sharp minor
 Chord V
 First Inversion

Question 4**CADENCES and HARMONY contd.****C****8**

Complete the following in four parts - S A T B - ending with the cadences named

Interrupted

Perfect

Question 5**MEMORY and TRANSPOSITION****Total Marks 15****A****8**

Write 'God Defend New Zealand'

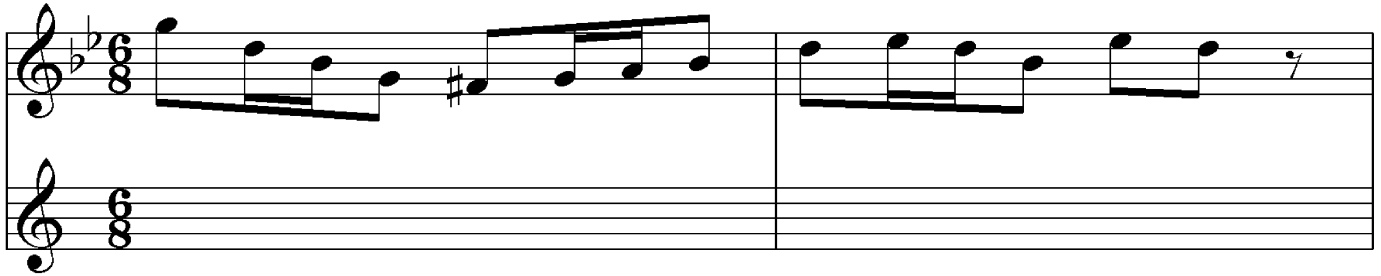
Do not write the words

Use phrasing

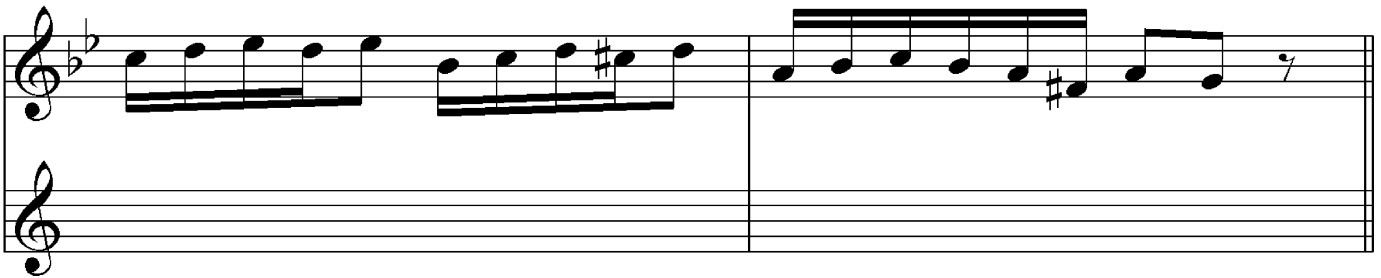
Use the treble clef

Question 5**MEMORY and TRANSPOSITION contd.****B****7**

Transpose the following melody down into the key of D minor.



Two staves of music. The top staff is in treble clef with a key signature of two flats (Bb and Eb) and a 6/8 time signature. It contains a melody of eighth notes: G4, F4, E4, D4, C4, B3, A3, G3, F3, E3, D3, C3, B2, A2, G2. The bottom staff is a blank bass clef staff.



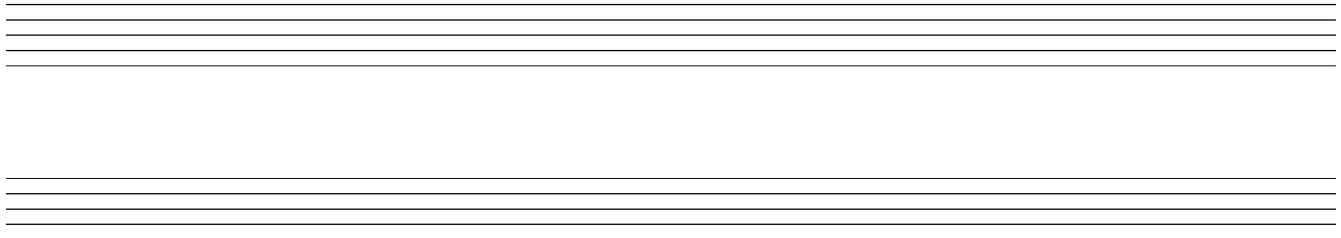
Two staves of music. The top staff is in treble clef with a key signature of two flats (Bb and Eb) and a 6/8 time signature. It contains a melody of eighth notes: G4, F4, E4, D4, C4, B3, A3, G3, F3, E3, D3, C3, B2, A2, G2. The bottom staff is a blank bass clef staff.

Question 6**COMPOSITION****Total Marks 10****EITHER****10**

Write a melody in E Major to the following couplet.

- Write the words clearly under the notes
- Use hyphens for words of more than one syllable
- Use separate stems for separate syllables
- Use phrase marks

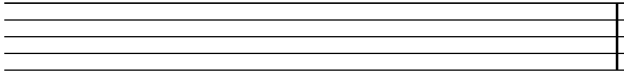
*Love not me for comely grace
For my pleasing eye of face Anon*



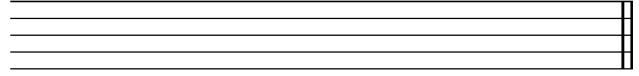
Two sets of blank musical staves, each consisting of a treble clef staff and a bass clef staff.

Question 7**TERMINOLOGY contd.****C****2**

Write the open string tunings of each of these stringed instruments - using the appropriate clefs.



Viola



Cello

D**3**

Describe the form, time and character of the Gavotte.

E**2**

Briefly define 'syncopation'
