

Available Marks	Total Marks Gained
100	



Entrant Name

# New Zealand Music Examinations Board

## THEORY - SECOND GRADE

Time: 9.30am- 11.00am

Saturday 7th May 2011

Time Allowed: 1 1/2 Hours

Write your name in the box labelled 'Entrant Name'

Question 1	TIME and RHYTHM	Total Marks 20
------------	-----------------	----------------

**A** 5

Add a rest or rests at each of the places marked \* to make the bars complete

a)

4

b)

3

c)

d)

**B** 4

Add the missing barlines to the following, which starts on the first beat of the bar

**C** 4

Write a time signature for each of the following:

a)

b)

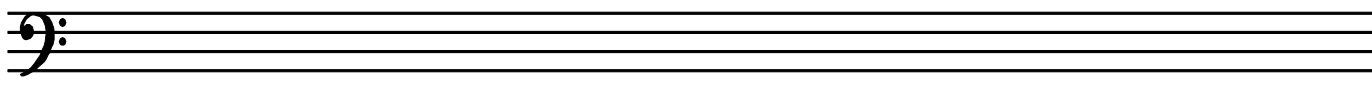
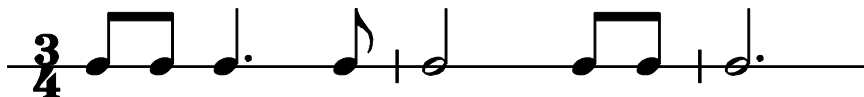
A

5

Write the scale of A major

- Write the scale descending
- Use the given rhythm pattern
- Write the key signature
- Complete the scale with a double barline

Rhythm Pattern

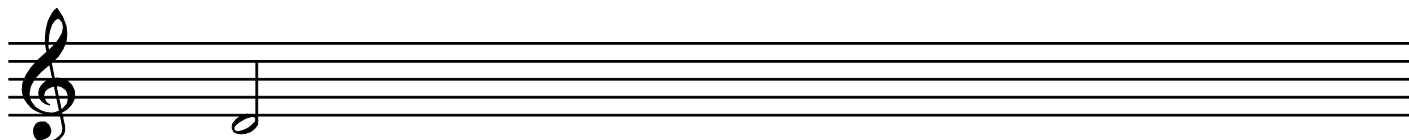


B

5

Write the minor scale that begins on the given note.

- Write the key signature
- Write one octave ascending
- Use minims
- Mark each tone with a slur
- Complete the scale with a double barline

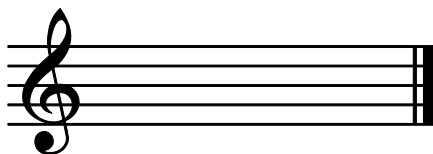


C

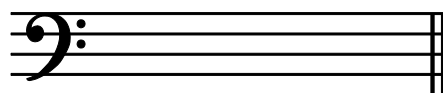
4

For each of the following write

- the key signature
- the tonic triad



D minor

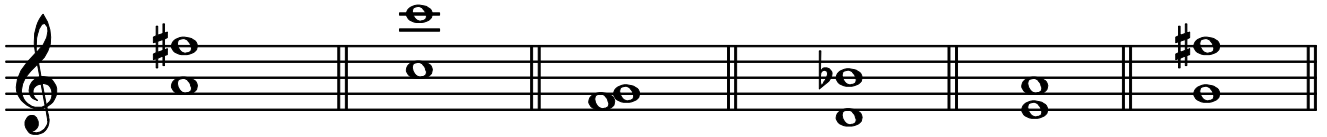


A Major

**A**

**12**

Name each of these following intervals by number and quality (eg Major 6<sup>th</sup>)



Number: \_\_\_\_\_

Quality: \_\_\_\_\_

**B**

**6**

Write these intervals above the given notes.



Minor 6<sup>th</sup>

Major 3<sup>rd</sup>

Perfect 5<sup>th</sup>

Major 7<sup>th</sup>

Major 6<sup>th</sup>

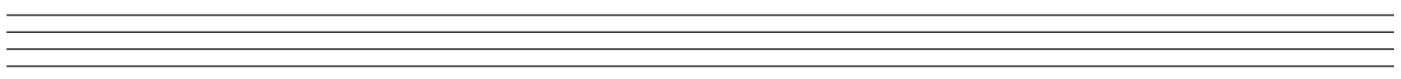
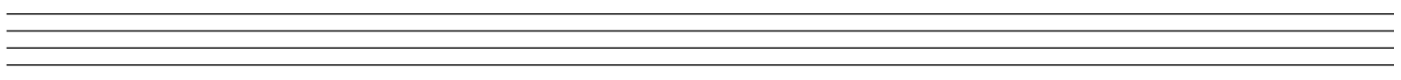
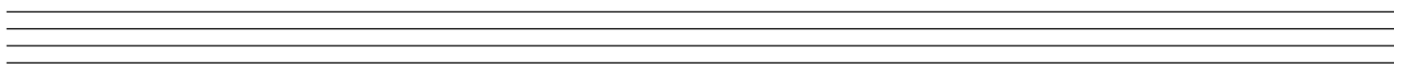
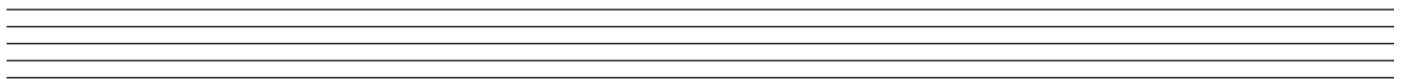
Perfect 8<sup>ve</sup>

**A**

**12**

Write the whole melody of 'Pokarekare Ana' from memory

- Do not write the words
- Use the treble clef
- Mark the phrasing



**A****10**

Transpose this melody up into the key of A major. Add the new key signature.

**A****8**

Place a barline before each accented syllable or word in the following couplet.

In the sun you could see the breeze  
Rustling the leaves of the Kauri trees

**A**

**10**

There are twelve bars in the melody below. Study it carefully then answer the questions that follow.



- 1) Add a word to show that the melody is to be played very fast.
- 2) Add a pause sign above the note in bar 12.
- 3) Add a sign below bar 10 to show that the melody is getting gradually softer.
- 4) Add a tie at a suitable place.
- 5) What is the meaning of the signs above beats 1 and 2 in bar 3? \_\_\_\_\_  
\_\_\_\_\_
- 6) Add an accent sign above beats 2 and 3 in bar 8.
- 7) Name the form of the melody \_\_\_\_\_
- 8) Mark the sections of the melody with the letters A B or A B A

<b>1</b>	
<b>1</b>	
<b>1</b>	
<b>1</b>	
<b>1</b>	
<b>1</b>	
<b>2</b>	
<b>2</b>	

B

8

Give the English meanings of the following terms:

1) *Lento* \_\_\_\_\_

2) *Allegretto* \_\_\_\_\_

3) *Allargando* \_\_\_\_\_

4) *Piu mosso* \_\_\_\_\_

5) *Dal segno* \_\_\_\_\_

6) *Cantabile* \_\_\_\_\_

7) *Accelerando* \_\_\_\_\_

8) *Senza* \_\_\_\_\_