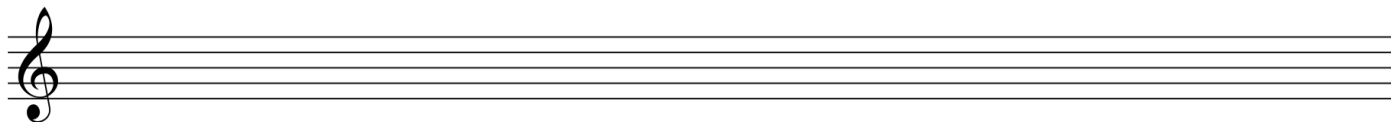


Question 2**SCALES and MODULATION****Total Marks 10****A****4**

Write the scale of B flat harmonic minor

- Write the key signature
- Use minims
- Write one octave ascending and descending
- Mark each semitone with a slur

**B****4**

Write the following four key signatures, then write the notes as indicated. Use minims.

F sharp minor
SubmediantB Major
SupertonicG flat major
SubdominantC minor
Leading note**C****2**

The following melody modulates and ends in a new key. State:

- The name of the new key
- The relationship of the new key to the original tonic key

Key of
Modulation: _____Relationship to original
tonic key: _____**Question 3****INTERVALS****Total Marks 11****A****3**

Name the following intervals (eg. major 3rd) written above the given tonic notes.







Question 3**INTERVALS contd.****B****4**

Write these as melodic intervals above the given tonic notes.



Perfect 5th

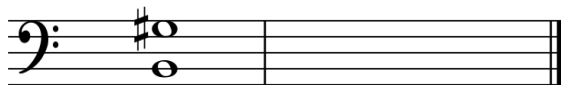
Major 6th

Augmented 4th

Minor 7th

C**4**

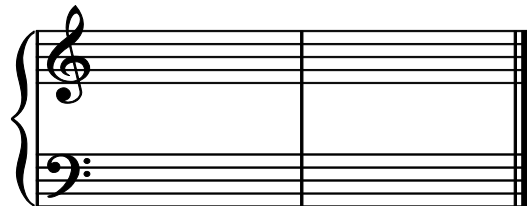
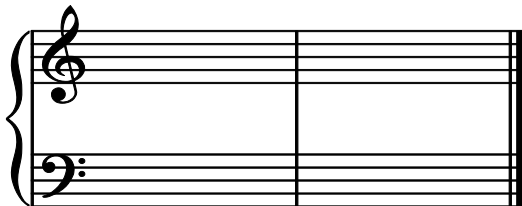
Beside each of the following intervals write the inversions as harmonic intervals. Name the interval of each inversion.



Question 4**CADENCES and HARMONY****Total Marks 26****A****8**

Write the following Cadences

- Use the correct key signatures
- Use crotchets



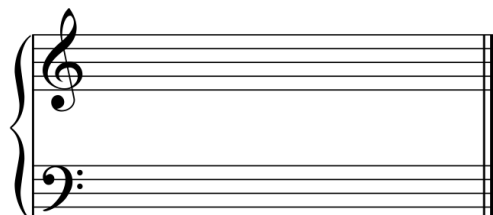
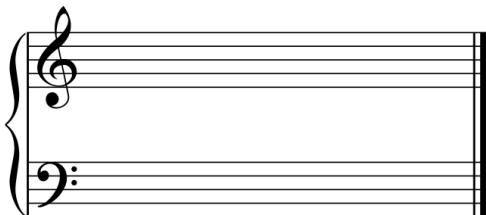
Interrupted
B major
Pianoforte Style

Imperfect
F minor
Four Part Vocal Style

B**6**

Write the following chords in four-part vocal style

- Use accidentals, not key signatures
- Use minims



C minor
Chord VI
First inversion

D flat major
Chord V
First inversion

Question 4**CADENCES and HARMONY contd.****C****12**

Complete the following in four parts - S A T B - ending each of the three phrases with appropriate cadences.

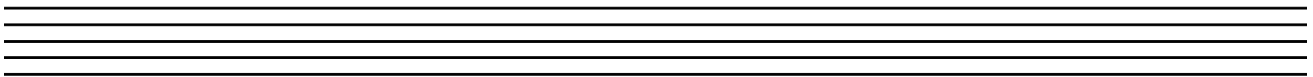
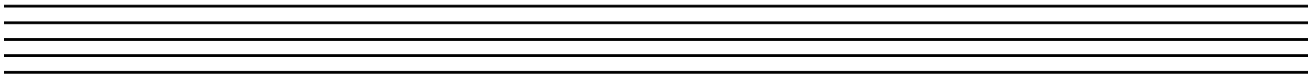
Question 5a**MEMORY****Total Marks 8****A****8**

Write "God Defend New Zealand"

- Do not write the words
- Use phrasing
- Use the treble clef

Question 5b**TRANSPOSITION****Total Marks 5****B****5**

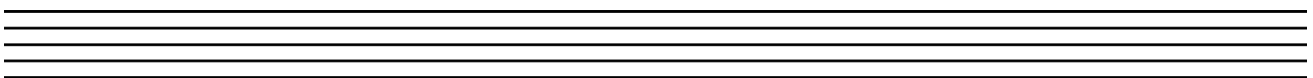
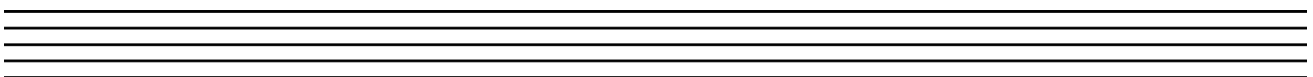
Transpose the following melody down into the key of G minor

**Question 6****COMPOSITION****Total Marks 10****EITHER****10**

Write a melody in B flat major to the following verse.

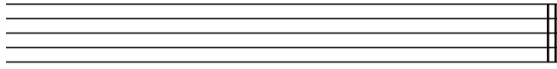
- Write the words clearly under the notes
- Use hyphens for words of more than one syllable
- Use phrase marks

*"On a cloudy day with the wind blowing chill,
The rimu tree stands on top of the hill"*

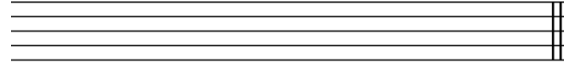


C**4**

i) Write the open string tunings of each of these stringed instruments using the appropriate clefs.



Violin



Viola

ii) What is the interval between each of the strings of the double bass?

iii) Which string instrument uses bass and tenor clefs?

D**2**

Name and describe two time signatures commonly used for gigues.

E**2**

Describe the differences between a minuet and a sarabande.
