

Available Marks	Total Marks Gained
100	



Entrant Name

# New Zealand Music Examinations Board

## THEORY - SECOND GRADE

Time: 9.30am- 11am

Saturday 13th June 2020

Time Allowed: 1 1/2 Hours

Write your name in the box labelled 'Entrant Name'

<b>Question 1</b>	<b>TIME and RHYTHM</b>	<b>Total Marks 20</b>
-------------------	------------------------	-----------------------

<b>A</b>	<b>6</b>
----------	----------

Add a rest or rests at each of the places marked \* to complete the bars

a) 4

b) 4

c) 4

<b>B</b>	<b>4</b>
----------	----------

Add the missing barlines to the following melody, which starts on the first beat of the bar

<b>C</b>	<b>2</b>
----------	----------

Write a time signature for each of the following

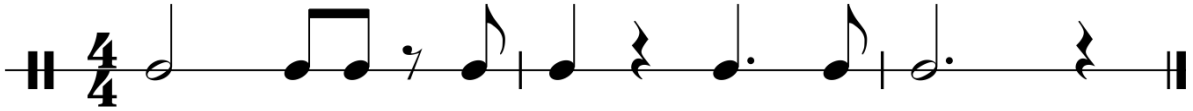
A

5

Write the scale of A major

- Write the key signature
- Use the given rhythm pattern
- Write the scale descending
- Complete the scale with a double barline

Rhythm:

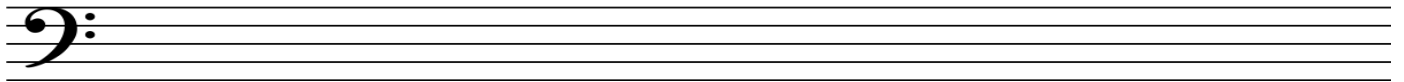


B

5

Write D harmonic minor scale on the bass stave below

- Use accidentals
- Write two octaves ascending
- Use minims
- Mark each tone with a slur
- Complete the scale with a double barline

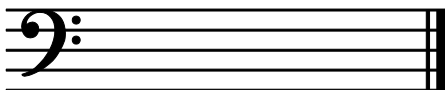


C

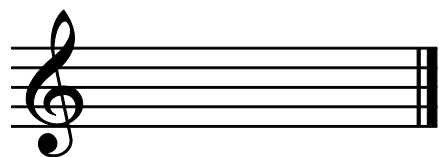
4

For each of the following write

- the key signature
- the tonic triad
- use semibreves



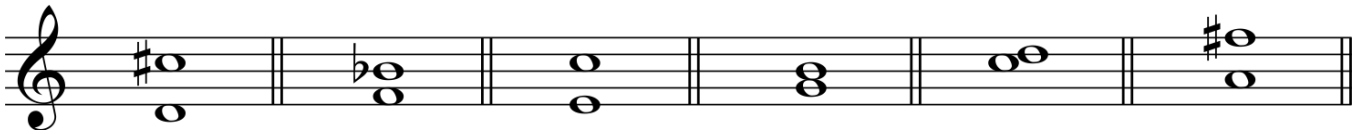
E minor



D Major

**Question 3****INTERVALS and TRIADS****Total Marks 18****A****12**

Name each of these intervals by number and quality (eg Major 6th)

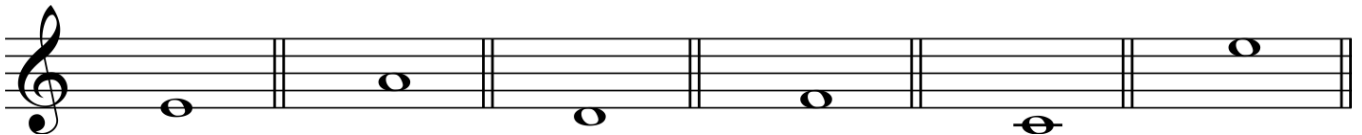


Quality: \_\_\_\_\_

Number: \_\_\_\_\_

**B****6**

Write these intervals above the given notes



Minor 6th

Perfect 5th

Minor 3rd

Major 7th

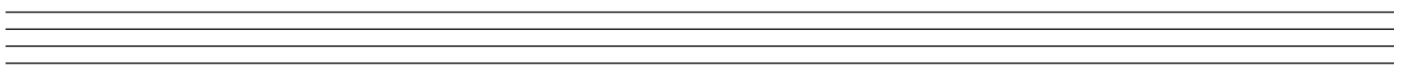
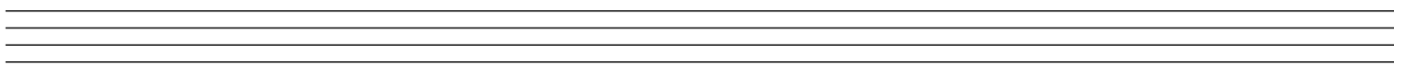
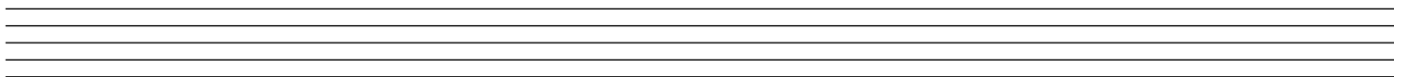
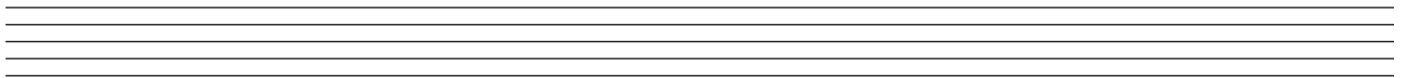
Major 3rd

Major 2nd

**Question 4****MEMORY****Total Marks 12****A****12**

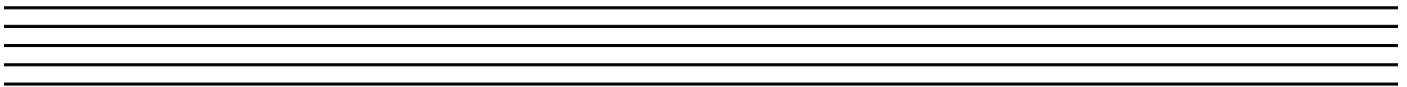
Write the whole melody of 'Pokarekare Ana' from memory

- Do not write the words
- Use the treble clef
- Mark the phrasing



**A****10**

Transpose this melody up into the key of A minor

**A****8**

Place a barline before each accented syllable or word in the following couplet

Summer days are hot and dry

Love the clear and bright blue skies.

**A**

**10**

There are twelve bars in the melody below. Study it carefully then answer the questions that follow.

- 1) Add a word above the first note, to show that the melody is to be played in a singing style
- 2) Add a sign below bar 1 to show that the melody begins moderately loudly
- 3) Add a slur under the quavers in bar 1
- 4) Add a repeat sign in bar 12
- 5) What is the meaning of the slur joining the last note of bar 3 and the first note of bar 4?  
 \_\_\_\_\_  
 \_\_\_\_\_
- 6) What does the sign over the last note in bar 4 mean?  
 \_\_\_\_\_
- 7) Name the form of the melody \_\_\_\_\_
- 8) Mark the sections of the melody with the letters A B or A B A

<b>1</b>	
<b>1</b>	
<b>1</b>	
<b>1</b>	
<b>1</b>	
<b>1</b>	
<b>2</b>	
<b>2</b>	

B

8

Give the English meanings of the following terms:

1) *Lento* \_\_\_\_\_

2) *Presto* \_\_\_\_\_

3) *Ritenuato* \_\_\_\_\_

4) *Dal segno* \_\_\_\_\_

5) *Senza* \_\_\_\_\_

6) *Molto* \_\_\_\_\_

7) *Sostenuto* \_\_\_\_\_

8) *Accelerando* \_\_\_\_\_