

Available Marks	Total Marks Gained
100	



Entrant Name

New Zealand Music Examinations Board

THEORY - FIFTH GRADE

Time: 9.30am- 12.30pm

Saturday 28th October 2023

Time Allowed: 3 Hours

Write your name in the box labelled 'Entrant Name'

Question 1	SCALES	Total Marks 10	
------------	--------	----------------	--

A		7	
----------	--	----------	--

Using a bass clef write the melodic minor scale which has G sharp as its dominant, beginning and ending on the tonic

- Write accidentals not the key signature
- Use minims
- Write one octave ascending and descending
- Mark each semitone with a slur

B		3	
----------	--	----------	--

Write the treble clef then write these key signatures

- D flat major
- F sharp minor
- C sharp major

D flat major

F sharp minor

C sharp major

Question 2**INTERVALS****Total Marks 14****A****6**

Name the following intervals by number and quality. Name one scale in which this interval may be found.

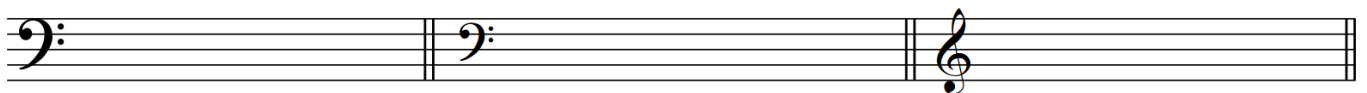


Interval: _____

Scale: _____

B**3**

Now invert the intervals and name them.



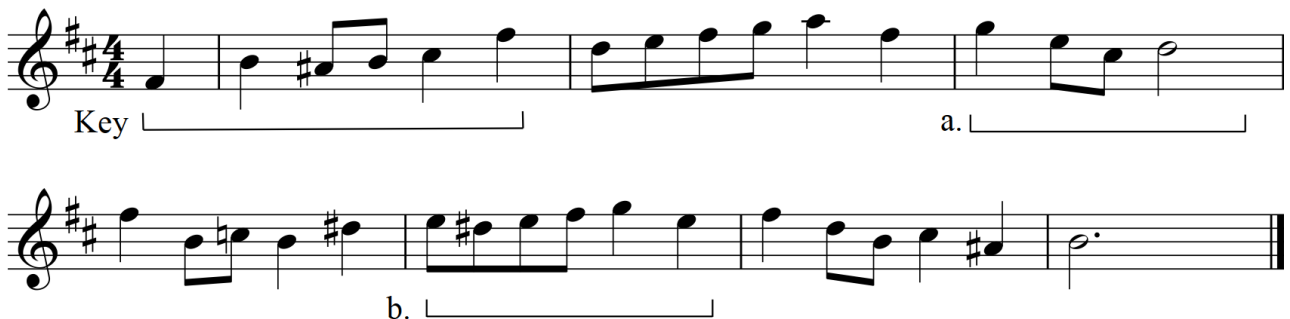
Interval: _____

C**5**

Write these intervals above or below the given notes as indicated.

Major 7th
aboveAugmented 4th
belowDiminished 5th
aboveMajor 3rd
belowMinor 6th
below**Question 3****MODULATION****Total Marks 4****A****4**

Name the key of this melody and name the keys at a and b.



Key _____ a) _____ b) _____

Relationship of key at a) to the tonic key _____

Question 4**HARMONY****Total Marks 28****A****16**

Harmonize the following melody in four vocal parts S A T B

**B****12****Cadences**

In pianoforte style, harmonize the bracketed notes with a cadence and the approach chord. Show one example of each of the four principal cadences. The passage contains modulations.



Question 5	FORM	Total Marks 16	
A		6	

Explain what is meant by "Air (or Theme) and Variation" form.

B		2	
----------	--	----------	--

Give an example of a movement of a sonata, symphony or chamber work which is an Air and Variation and name the composer.

C		2	
----------	--	----------	--

Name an Air and Variation that exists as an independent piece. Name the composer of this piece.

D		4	
----------	--	----------	--

a) What is a Recitative?

b) How does an Aria differ from a Recitative?

E		2	
----------	--	----------	--

Name an example of a Recitative and Aria by Handel or Mozart

Question 6**WOODWIND INSTRUMENTS****Total Marks 16****A****6**

Compare the characteristics of the bassoon and the oboe.

B**4**

Write the ranges of the bassoon and the oboe.

Bassoon

Oboe

C**4**

Explain why the sound of the oboe is different to the sound of the flute.

D**2**

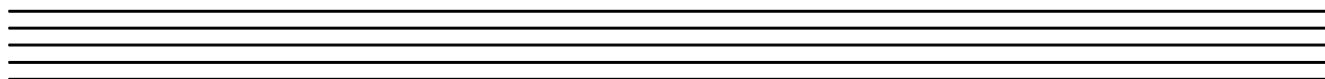
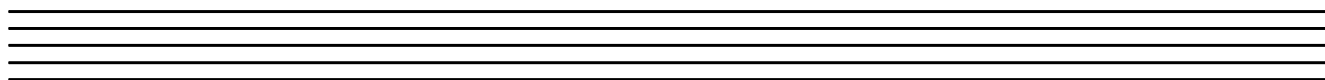
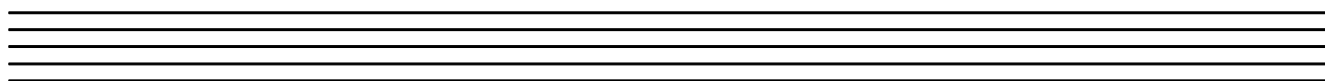
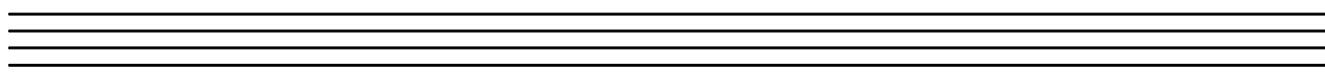
How are the oboe and the flute held when played?

Question 7**Total Marks 12****EITHER****12**

Write a melody in a key of your own choice, to the following verse.

- Write the words clearly under the notes
- Hyphenate the syllables
- Phrase marks are to be used
- Modulation is optional

*Outside in the cool clean air
I hear the tui singing clear
The vibrant flowers of the kowhai tree
Providing the bird with tea*

**OR****12**

Continue the given opening to create a balanced eight-bar melody

- Add phrasing
- Modulation is optional

